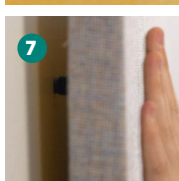
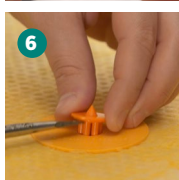
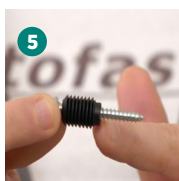
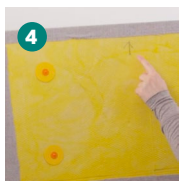
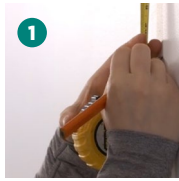


Rotofast™ Snap-on Anchors

Rotofast™ Snap-on Anchors are an easy and secure mounting method for installing our FulFill Acoustical Panels on walls or ceilings.



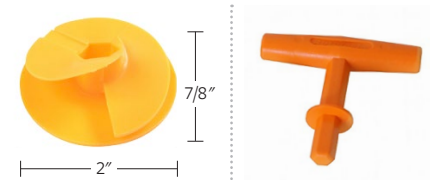
Before you start:

- Have a layout plan handy so you'll know exactly where to place the panels.
- Check all required tools and supplies are available.
- Determine how many Snap-on Anchors are required for your panel size(s). (Guide bottom right).

INSTALLATION INSTRUCTIONS:

1. Pre-mark and measure panel placement on the walls and ceiling. Mark the orientation of the panel on the back of the panel with a pencil.
2. With the Installation Tool, screw the Snap-on Anchor into the back of the panel. **Important:** Place anchors 6-8" from panel edge. Do not overtighten anchors.
3. Insert the reusable Snap-On Marking Plug into the center of each Snap-on Anchor.
4. Line up the back of the panel with your markings on the wall for proper placement (check that panel orientation is correct) and press the Snap-on Marking Plugs against the wall to indicate ratchet locations.
5. Screw the ratchet to the wall at the marked locations with a #8 screw and a hollow wall anchor where necessary. (Use a stud finder and check each mark location for a stud. If none is available, use a common nail and hammer and tap the nail at the mark location to see if it hits a stud. If none is found use a hollow wall anchor.) **Note:** The flat end of the ratchet goes against the wall, the curved end faces out.
6. Remove Marking Plug from the Snap-on Anchor.
7. Line up the panel so that each ratchet engages with center of each anchor. Firmly strike the panel onto the ratchets to complete the installation.

Rotofast Snap-on Anchor Parts:



Snap-on Anchor

Installation Tool



Snap-on Marking Plug

Snap-on Ratchet

Additional tools needed:

- Level
- Tape measure
- Pencil for marking panel placement
- Power screwdriver or drill
- Hammer
- Stud finder or common nail

Additional supplies needed:

- #8 screws (not included)
- Hollow wall (drywall) anchors (not included)



Snap-on Anchors required:

| Panel Size | Anchors |
|--------------------------------|---------|
| 2' x 2' to 4' x 4' | 4 |
| larger than 4' x 4' to 4' x 6' | 6 |
| larger than 4' x 6' to 4' x 8' | 8 |

Snap-On Anchors have a 45lb pull-out strength in 6lb/ft³ fiberglass board